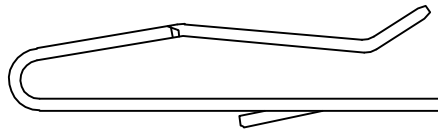
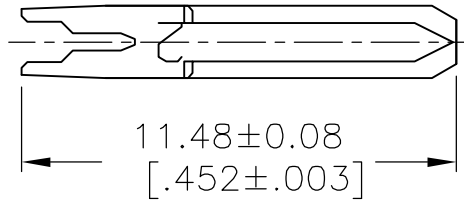
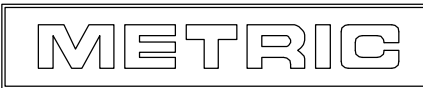


LOC	DIST	REVISIONS					
CM	00	P	LTR	DESCRIPTION	DATE	DWN	APVD
		L		REVISED PER EC-07-007260	09APR07	KW	DB



TIN	640636-3
TIN-LEAD	640636-1
FINISH	PART NO

MATERIAL	FINISH
0.3 (.012) THK COPPER ALLOY	MATTE TIN OR BRIGHT TIN-LEAD 0.00203(.000080) MIN THK



RELEASED FOR PUBLICATION

ALL RIGHTS RESERVED.

BY TYCO ELECTRONICS CORPORATION.

© COPYRIGHT

THIS DRAWING IS UNPUBLISHED.

DIMENSIONS: mm [INCHES]	DWN	25OCT2005	MATERIAL	FINISH			
	BSV		-	-			
TOLERANCES UNLESS OTHERWISE SPECIFIED:	CHK	25OCT2005	Tyco Electronics Corporation Harrisburg, PA 17105-3608				
	D. BOSSI						
0 PLC ± - 1 PLC ± - 2 PLC ± - 3 PLC ± - 4 PLC ± - ANGLES ± -	APVD	25OCT2005	NAME CONTACT, LOOSE PIECE. 22 AWG WIRE, MTA-100				
	D. BOSSI						
	PRODUCT SPEC		SIZE	CAGE CODE	DRAWING NO	RESTRICTED TO	
	APPLICATION SPEC		A4	00779	C-640636	-	
WEIGHT			CUSTOMER DRAWING		SCALE	SHEET	REV
					5:1	1 OF 1	L